

INSTALLATION - WIRING

Possible example only.
Read spec stickers and wire labels
for exact color coding.



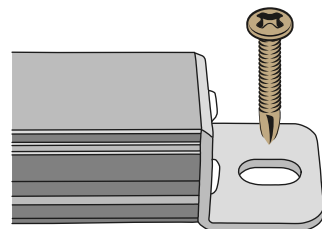
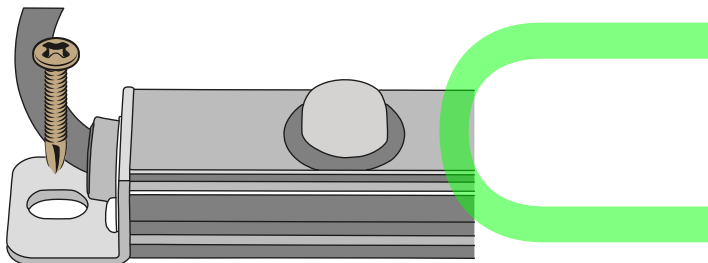
POSITIVE (+)

NEGATIVE (-)

INSTALLATION - MOUNTING

- Test the Light Strip before installing.
- Ensure flat surface for installation.

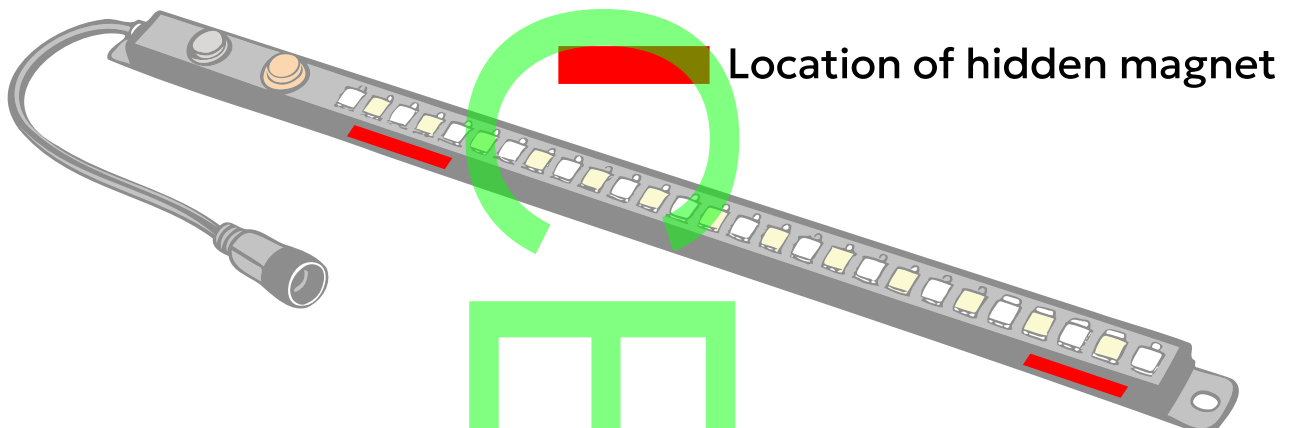
END CAP SCREW MOUNT



- Use the Screws to fix the Light Strip in place.

MAGNET MOUNT

- Simply stick the back of the Light Strip onto a ferrous surface.



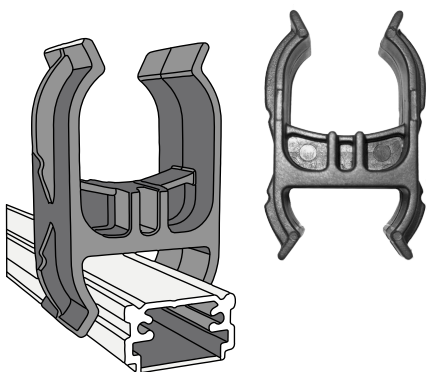
INSTALLATION - MOUNTING

HIGH-ADHESIVE STRIP



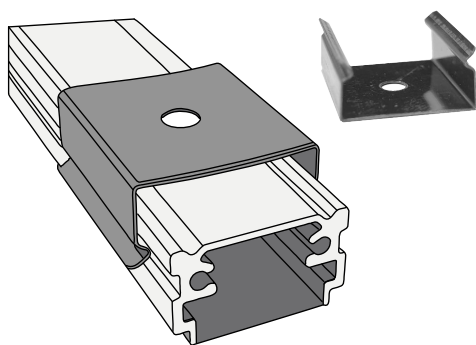
- Remove the protection film over the adhesive tape.
- Stick the back of the Light Strip onto a flat surface. Apply even pressure over the Light Strip to secure.

POLE CLIP



- Clip the short end of the H-shape pole clip to the back of the Light Strip.
- Clip the long end of the pole clip to your metal rod of choice.

SCREW MOUNT BRACKET



- Clip the opening of the brackets to the Light Strip, and stick to the assembly onto your surface of choice for test fitting.
- Remove the bracket, secure the bottom of the brackets to your surface of choice.
- Clip the Light Strip onto the brackets.