



Shenzhen Green New Source Lights Technology Co., Ltd.

ALUMINUM TRI-COLOR LIGHT STRIP CLASSIC STYLE



FEATURES

- **FULL CUSTOM TRI-COLOR LEDS** – All 3 colors in one compact uniform LED array.
- **DIMMER/TOGGLE SWITCHES** – Dimming and color switching at one key press!
- **ULTRA-LOW POWER DRAW** - Low consumption and **start battery compatibility**
- **TOUGH AND WATERPROOF BUILD** - Robust cast aluminum housing & resilient silicone filling. Top-tier **IP67 water proofing**.
- **SUPER SIMPLE INSTALLATION** - Easily followed mounting and wiring layouts.
- **HIGH CUSTOMIZABILITY** - Multiple wiring options; multiple light color variants available.

RECOMMENDED USE CASES

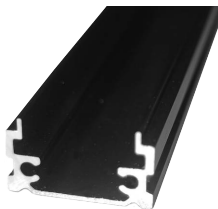
- **4WD & off-road vehicles** – Ute/truck canopies, toolboxes, and roof racks.
- **Caravans & RVs** – Awnings and interior spaces.
- **Work vehicles & canopies** – Service vehicles and workspaces.
- **Marine & boating**
- **Cabinets & signage** – Interior lighting, displays, and commercial signage.
- **Campsites** – Bright, energy-efficient lighting for campsites.



GNSOURCE

GENERAL INFO

Material properties	
Size (cross section)	16.5mm x 9mm
Housing color	Options available: Black (coating) or fresh metal color
Housing material	ADC12 Aluminum, with powdered coating
Filling material	Silicone resin coating Options available: Clear coating or milky diffused coating
Working Temperature	-40 °C - 75 °C
Certifications	RoHS, CE, FCC, C-Tick
Lifespan	50000 hrs
Electrical/Optical properties	
Luminous Efficiency	100 lm/W



16.5mm x 9mm
Metal housing
cross section



16.5mm x 9mm
Switch area layout

SPECIFICATIONS

16.5mm x 9mm CLASSIC		
Switch type		Single dimmer switch
Color options		3 colors <ul style="list-style-type: none">• White + Amber + Red• White + Blue + Red• More...
LED specs		Tri-color SMD5050
Voltage options		12V DC
Length options & specs	300mm	21 LEDs Luminous flux (white): 180lm Rated power: 3W
	600mm	45 LEDs Luminous flux (white): 380lm Rated power: 8W
	900mm	72 LEDs Luminous flux (white): 520lm Rated power: 10W
	1000mm	81 LEDs Luminous flux (white): 620lm Rated power: 12W

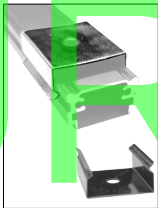
Mounting options / accessories



H-shape Pole Clips



3M Adhesive Strip



Screw-Mount Brackets



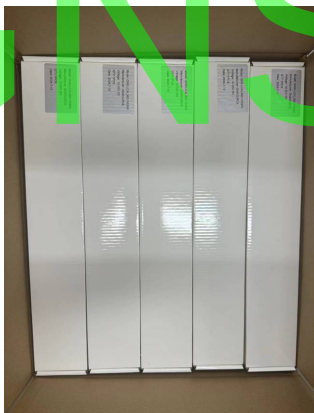
Built-In Magnets (hidden)



End Cap Screw Mounts

CUSTOMIZATIONS

- **Packaging:**
 - Standard packaging: Anti-static bags, soft bags, white cardboard boxes
 - **Custom packaging:** Custom printed cardboard boxes, labeled bags, blister pack, etc.
- **Logo printing:** Silkscreened logo on PCB, laser printed logo on metal housing, etc.
- **Wiring:** Various wire lengths and connection options available
- **Custom sizes and housing design:** contact for more details



White boxes



Custom printed boxes



Custom labeled bag

WARNING



1. The lights must be used only for the prescribed purpose. To use the lights properly, please closely observe the instructions found in the manual. Any uses outside those mentioned in the manual will be considered misuse. **The manufacturer shall not be liable for any damage or injuries resulting from misuse.**

2. Keep children away from electrical equipment. Make sure the children are under supervision when operating the lights.

3. Do not use any power supply that outputs any voltage outside of the lights' nominal voltage range. Over-voltage can cause irreversible circuitry damage and even fires.

4. Do not use the lights in the temperature outside of the operational range.

5. Do not clean your lights with harsh detergents. The light is water-proof but not guaranteed to be protected against other chemicals.



Your LED lighting partner.

Shenzhen Green New Source Lights Technology Co., Ltd.

Website: www.gnsourcegroup.com Email: info@gnsource.cn

Phone: +86(0755) 2374 7167

Wechat/Whatsapp: +86 183 1906 2536



MADE IN CHINA